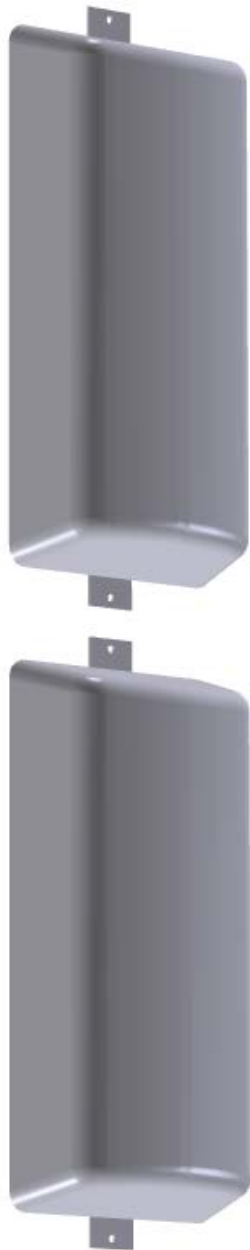


Model "2SVP600-60"



*Double bay* of the broadband four dipole panel covering the 470-698 MHz spectrum. The radiating elements and structural dipoles are entirely welded to the support spine. This results in an enhanced reduction in PIM, even after many years of being in service.

The radome covering the dipoles and internal feed conductors allow this antenna to operate reliably under extreme snow, rain, frost, or icing conditions.

Each system comes complete with an external 2-way power divider, cables, and hot dipped galvanized mounting clamps.

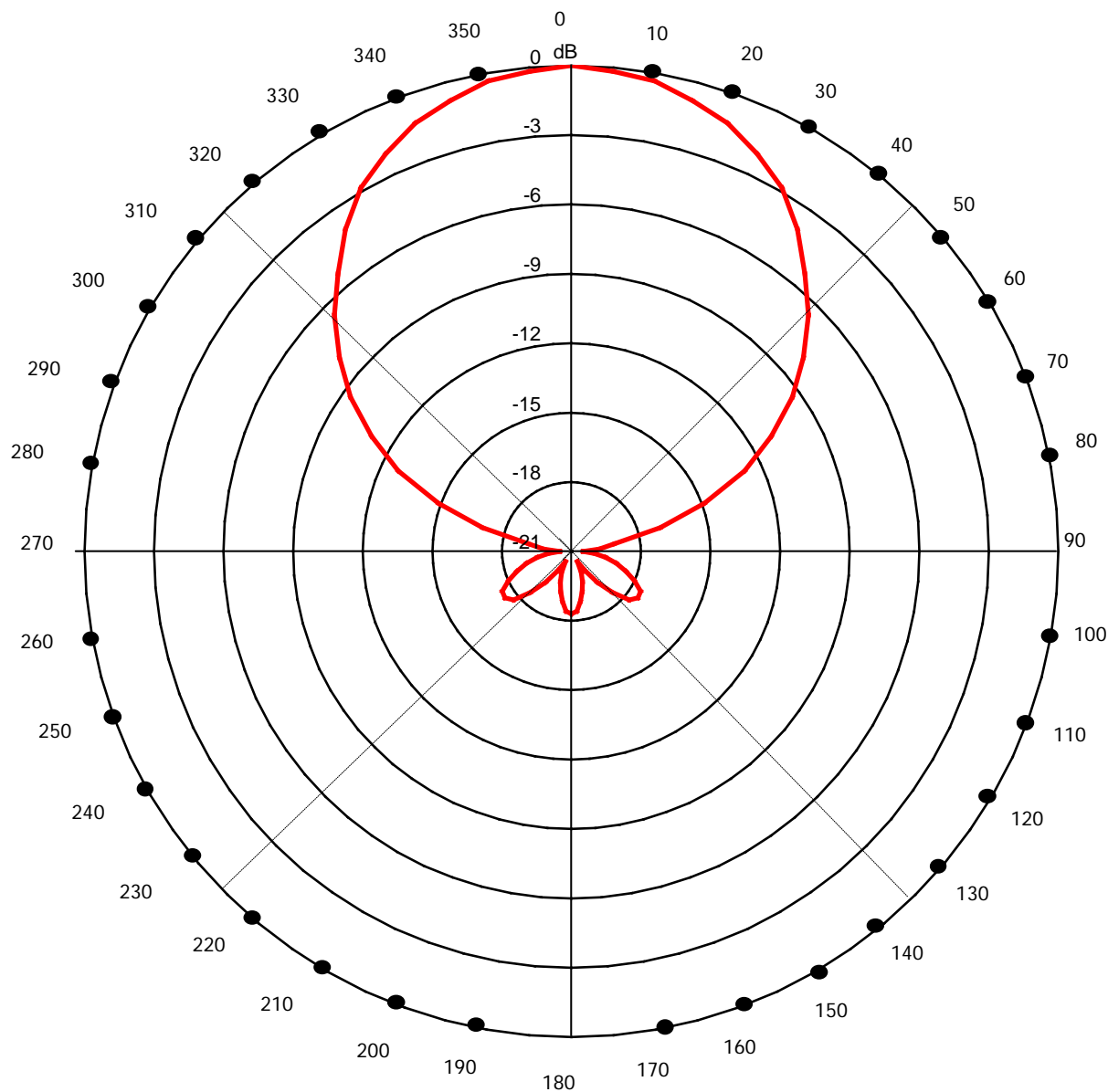
## Electrical

Frequency: 470-698 MHz  
Gain: 14.6 dBd (16.7 dBi) w/o electrical beam tilt  
Beam width: 60 degrees at 600 MHz (-3dB pts)  
Impedance: 50 ohms  
VSWR: <1.5:1 (1.25:1 typical)  
Polarization: Vertical  
Max. Input Power: 500W standard, higher input power available  
PIM: < -150 dBc (2 x 20w)  
Input Connector: N female  
F/B Ratio: 20 dB  
XPD: 22 dB typical  
Beam tilt: Any degree of electrical or mechanical available

## Mechanical

Weight: 40 lbs (without mounting hardware)  
Mounting: Hot dipped galvanized steel, customized to tower spec or standard pipe OD  
Radiating Elements: Structural Aluminum 4 dipole panel with machined brass connectivity  
Reflector: Galvanized sheet metal  
Radome: UV stabilized ASA  
Grounding: Antenna and radiating elements are fully DC grounded via the mounting hardware for lightning protection.  
Dimensions: 500mm wide X 2200mm long X 200mm deep  
Wind load: 1.63 kN Frontal, 500 N Lateral @ 160 km/h  
Vertical Height Req'd: 2.2 m / 7.2 feet

Horizontal Plane – 2SVP600-60



Vertical Plane – 2SVP600-60

