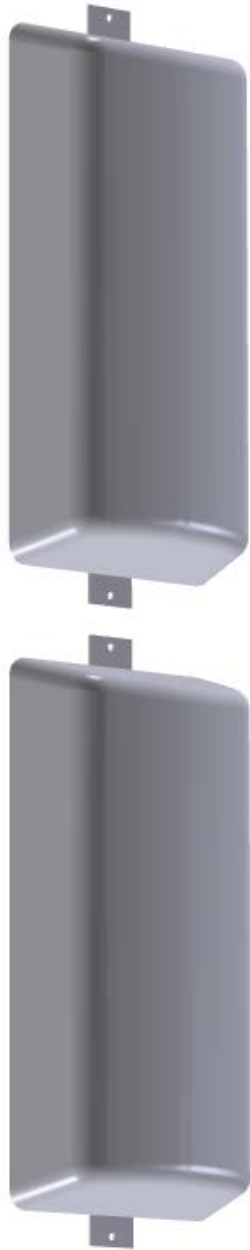


698-806 MHz
700 MHz



Model "2SVP700-60"



Double bay of the broadband four dipole panel covering the 698-806 MHz spectrum. The radiating elements and structural dipoles are entirely welded to the support spine. This results in an enhanced reduction in PIM, even after many years of being in service.

The radome covering the dipoles and internal feed conductors allow this antenna to operate reliably under extreme snow, rain, frost, or icing conditions.

Each system comes complete with an external 2-way power divider, cables, and hot dipped galvanized mounting clamps.

Electrical

Frequency: 698-806 MHz
Gain: 14.6 dBd (16.7 dBi) w/o electrical beam tilt
Beam width: 60 degrees at 750 MHz (-3dB pts)
Impedance: 50 ohms
VSWR: <1.5:1
Polarization: Vertical
Max. Input Power: 500W standard, higher input power available
PIM: < -150 dBc (2 x 20w)
Input Connector: N female
F/B Ratio: 20 dB
XPD: 22 dB typical
Beam tilt: Any degree of electrical or mechanical available

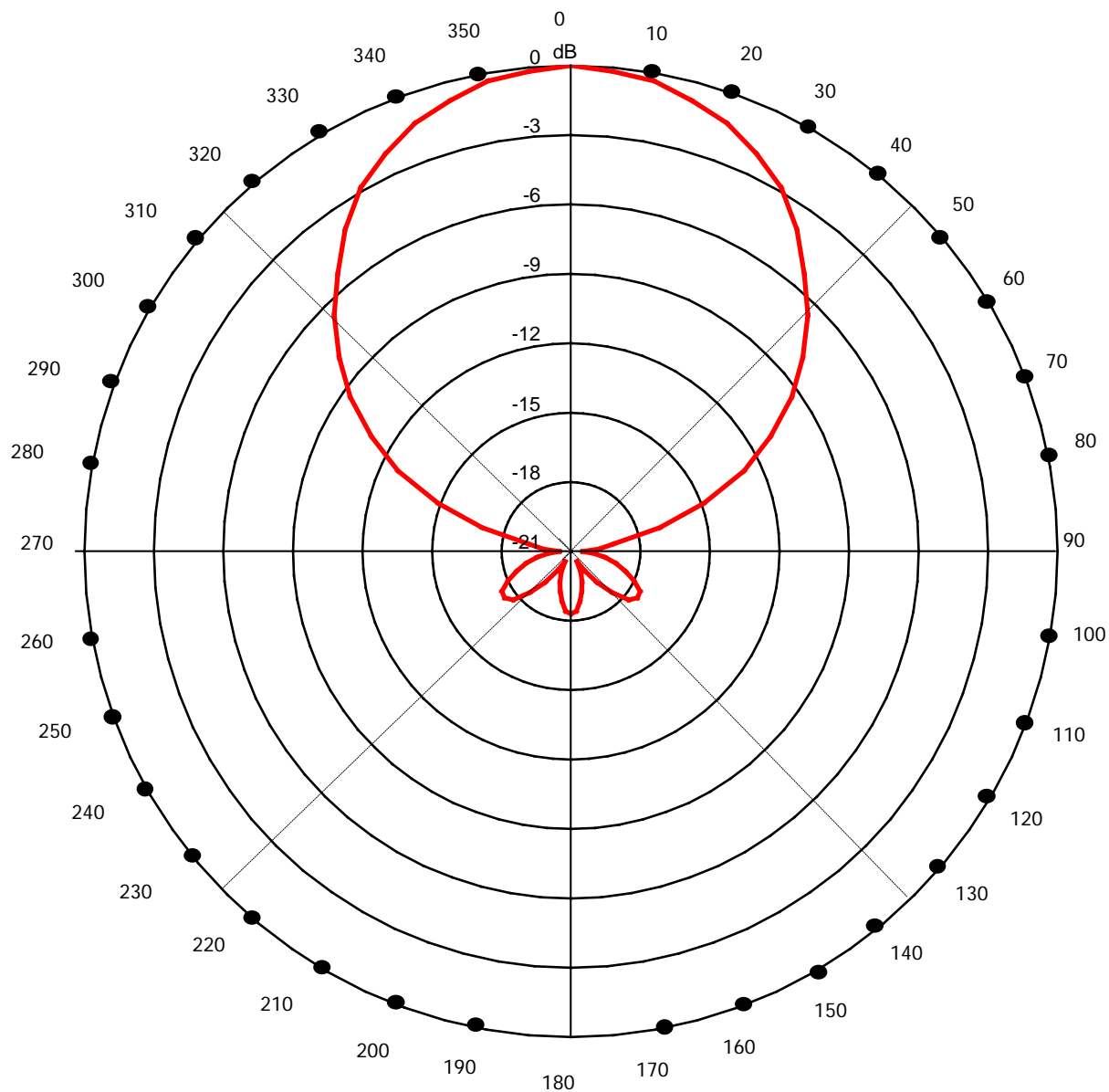
Mechanical

Weight: 40 lbs (without mounting hardware)
Mounting: Hot dipped galvanized steel, customized to tower spec or standard pipe OD
Radiating Elements: Structural Aluminum 4 dipole panel with machined brass connectivity
Reflector: Galvanized sheet metal
Radome: UV stabilized ASA
Grounding: Antenna and radiating elements are fully DC grounded via the mounting hardware for lightning protection.
Dimensions: 500mm wide X 2200mm long X 200mm deep
Wind load: 1.63 kN Frontal, 500 N Lateral @ 160 km/h
Vertical Height Req'd: 2.2 m / 7.2 feet

698-806 MHz
700 MHz



Horizontal Plane – 2SVP700-60



698-806 MHz
700 MHz



Vertical Plane – 2SVP700-60

